

LIMIT SWITCH OPERATION:

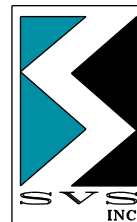
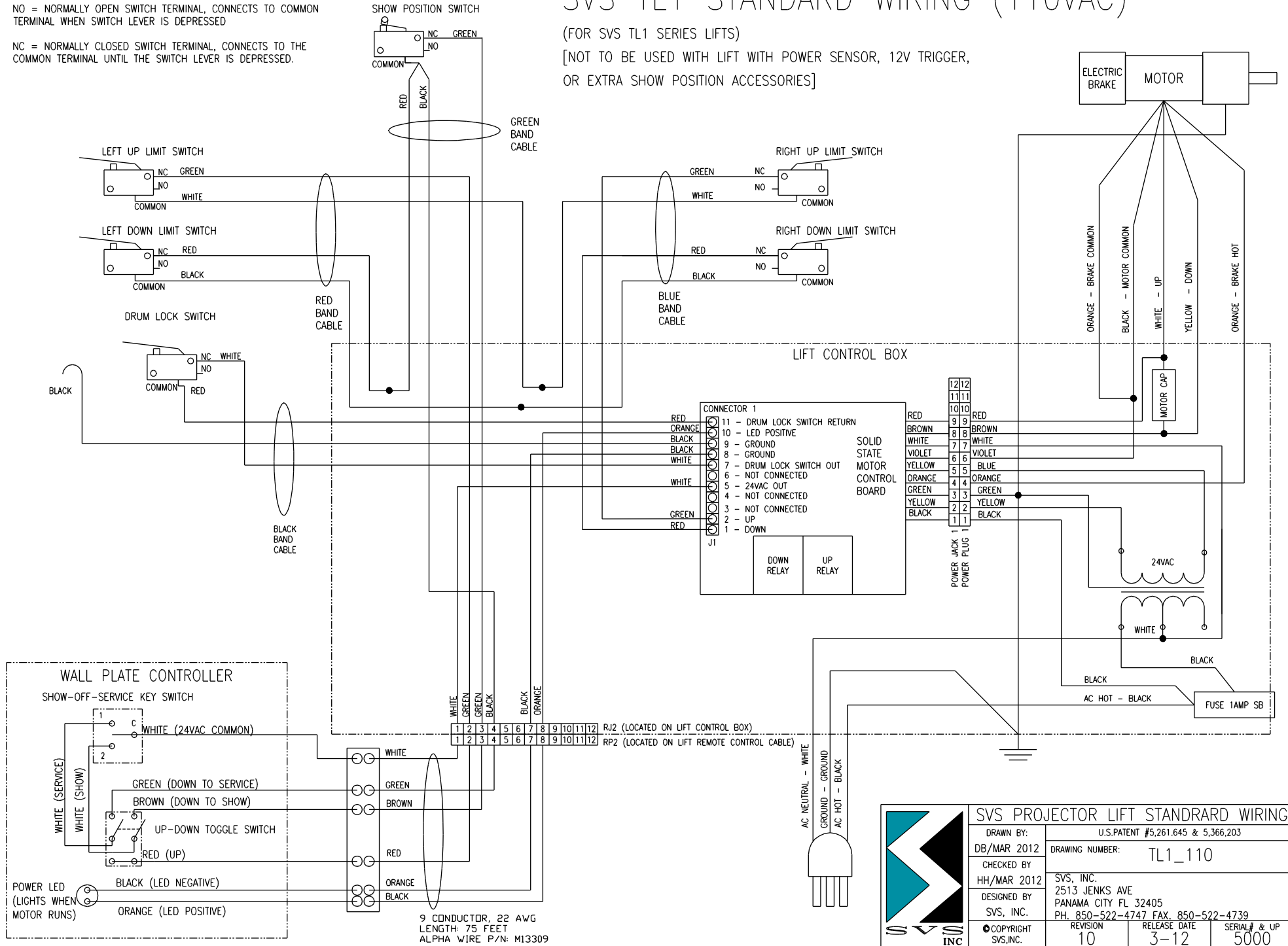
NO = NORMALLY OPEN SWITCH TERMINAL, CONNECTS TO COMMON TERMINAL WHEN SWITCH LEVER IS DEPRESSED

NC = NORMALLY CLOSED SWITCH TERMINAL, CONNECTS TO THE COMMON TERMINAL UNTIL THE SWITCH LEVER IS DEPRESSED.

# SVS TL1 STANDARD WIRING (110VAC)

(FOR SVS TL1 SERIES LIFTS)

[NOT TO BE USED WITH LIFT WITH POWER SENSOR, 12V TRIGGER, OR EXTRA SHOW POSITION ACCESSORIES]



| SVS PROJECTOR LIFT STANDRAD WIRING |   |                        |
|------------------------------------|---|------------------------|
| DRAWN BY:<br>DB/MAR 2012           | U.S. PATENT #5,261,645 & 5,366,203  |                        |
| CHECKED BY:<br>HH/MAR 2012         | DRAWING NUMBER:<br>TL1_110  |                        |
| DESIGNED BY:<br>SVS, INC.          | SVS, INC.<br>2513 JENKS AVE<br>PANAMA CITY FL 32405<br>PH. 850-522-4747 FAX. 850-522-4739 |                        |
| REVISION:<br>10                    | RELEASE DATE:<br>3-12   | SERIAL # & UP:<br>5000 |