

# SVS CEILING LIFTS

For Medium Size to Large Projectors

# SVS 4 Series



(Photo courtesy of Comunicaciones Informatica)

## PRODUCT FEATURES

- Supports medium size to large projectors
- Lowering distances from 5'6" to 10' (1.67 m to 3.05 m)
- Lifting Capacity up to 400 lbs (181.44 kg)
- Three positions: Stored, Show (adjustable) & Service
- Includes 24VAC wall plate controller for low voltage control & standard video cable management system.
- Very quiet operation
- Warranty: 5 Year parts, 1 year motor & 90 day factory labor

## SPECIFICATIONS

LIFT MODEL	MAXIMUM LOWERING DISTANCE	VERTICAL HEIGHT OF LIFT IN CLOSED POSITION (1) LIFT ONLY	PHYSICAL DIMENSIONS			
			WIDTH	DEPTH	NET WEIGHT	SHIPPING WEIGHT
SVS 4-5	5'6" /1.67m	11.5" /292 mm	24" /609.6 mm	34" /863.6 mm	120 lbs/ 54.43 kg	165 lbs/ 74.84 kg
SVS 4-7	7' /2.13m	13" /330mm			135 lbs/ 61.23 kg	180 lbs/ 81.64 kg
SVS 4-8	8'6" /2.59m	14.5" /368mm			150 lbs/ 68.03 kg	195 lbs/ 88.45 kg
SVS 4-10	10' /3.05m	16" /406mm			165 lbs/ 74.84 kg	205 lbs/ 92.98 kg

(1) Vertical height does not include projector, projector mount and ceiling closure. Supporting structure is additional

## STANDARD SPECIFICATIONS

<b>Voltage</b>	110v/220V, 60/50hz
<b>Current Draw</b>	1.5 amps [110v], .75 amps [220v]
<b>Control Voltage</b>	24VAC (contact closure)
<b>Materials</b>	Steel/Aluminum/Nylon

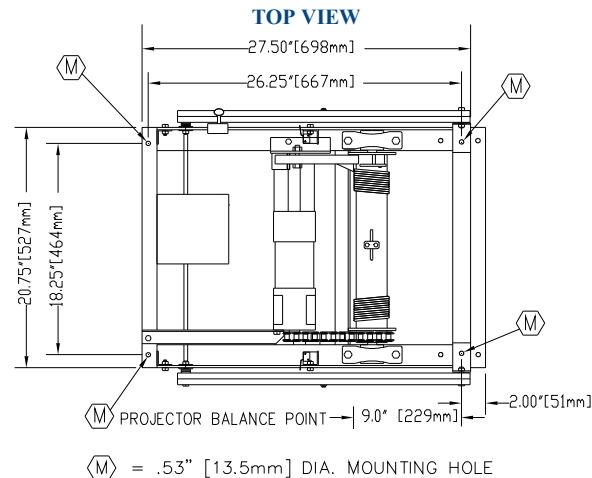
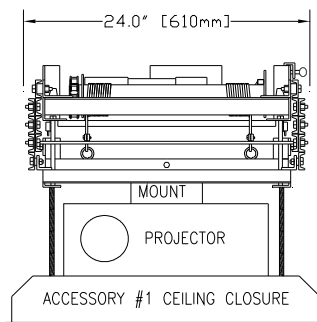
## RECOMMENDED ACCESSORIES

**#1 Ceiling Closure** - Self-aligning closure system complete with ceiling framework. Supplied with 15/16" ceiling trim ring. Designed to accept ceiling tile or dry wall ceiling. Supplied unpainted.

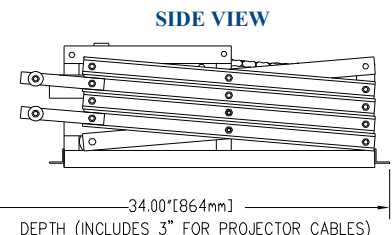
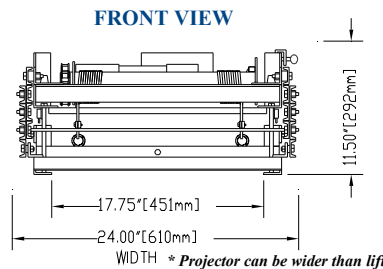
**FP1 Ceiling Closure** -Fixed mounted flat closure panel- Lipped or Lipless. Supplied with 15/16" ceiling trim ring. Ceiling material attaches to the bottom of the panel or closure may be painted. Supplied unpainted.

**#2 Plenum Shroud**- Protective Metal cover for lift and projector in air plenum rated ceiling.

**#9 Mount** - Mounting bracket used to attach the projector to the saddle of the lift in an inverted position (model varies with the projector model).



(M) = .53" [13.5mm] DIA. MOUNTING HOLE



U.S. Patent No. 5,261, 645 & 5, 366,203