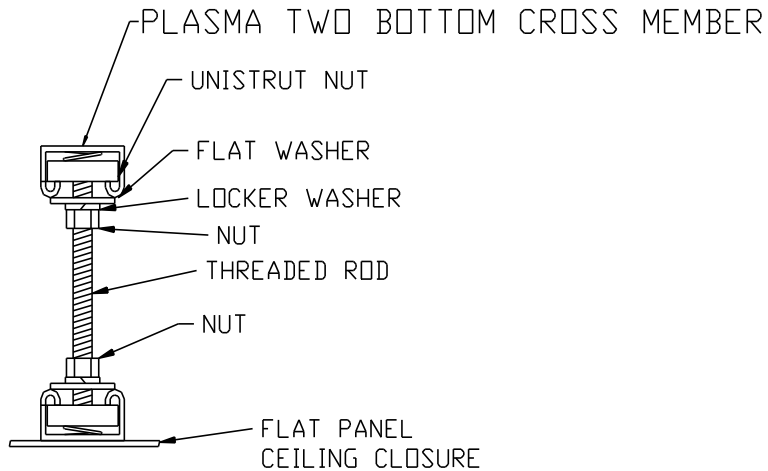


# PLASMA TWO FLAT PANEL CEILING CLOSURE INSTALLATION DETAIL



## UNISTRUT PLACEMENT ON FLAT PANEL



PLASMA TWO BOTTOM CROSS MEMBER WILL ALLOW SIDE-TO-SIDE ADJUSTMENT AND UNISTRUT ON FLAT PANEL WILL ALLOW FRONT-TO-BACK ADJUSTMENT.


POP-RIVETS USED TO ATTACH FLAT PANEL TO UNISTRUT FOR APPEARANCES.

THE FLAT PANEL IS MADE OF ALUMINUM AND SUPPLIED UNPAINTED.

Dimensions in inches unless noted:

Tolerances Unless Otherwise Noted:

Fractions:	Decimals:	.x	+/- .06	<.5	+0.05	-.001	
		.xx	+/- .02	Drilled Holes:	.5-1.0	+ .01	-.001
		.xxx	+/- .005		>1.0	+0.02	-.005
			+/- 1/32				

	Description: PLASMA TWO FLAT PANEL INSTALLATION DETAIL		
	Drawing no.	PLASMA 2 FP DETAILS	
	Material #	_____	
	Mat. Desc.	_____	
Drawn by	D.BOONE	Date	7/24/06
Checked by	G.GLASS	Rev.	Scale /